

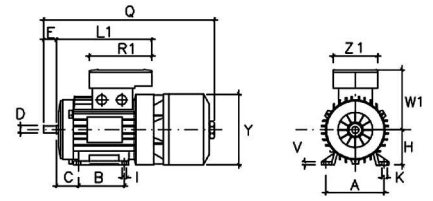


DIMENSIONS (mm inch)

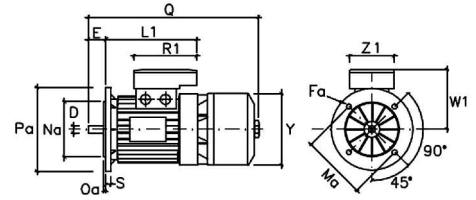
71 80 90S 90L 100L 112M 132S 132M 160M 160L 180L 200L 225S 225M 250M 280S 280M 315S 315M

A	112	125	140	140	160	190	216	216	254	254	279	318	356	356	406	457	457	508	508
B	90	100	100	125	140	140	140	178	210	254	279	305	286	311	349	368	419	406	457
C	45	50	56	56	63	70	89	89	108	108	121	133	149	149	168	190	190	216	216
D*	14	19	24	24	28	28	38	38	42	42	48	55	60	60	65	75	75	80	80
d	M5	M6	M8	M8	M10	M10	M12	M12	M16	M16	M16	M16	M16	M16	M20	M20	M20	M20	M24
E*	30	40	50	50	60	60	80	80	110	110	110	110	140	140	140	140	170	170	170
Fa	10	12	12	12	14.5	14.5	14.5	14.5	18.5	18.5	18.5	18.5	18.5	18.5	18.5	18.5	24	24	24
Fb	M6	M6	M8	M8	M8	M8	M10	M10											
f	5	6	8	8	8	8	10	10	12	12	14	16	18	18	18	20	20	22	22
g	11	15.5	20	20	24	24	33	33	37	37	42.5	49	53	53	58	67.5	67.5	71	71
H	71	80	90	90	100	112	132	132	160	160	180	200	225	225	250	280	280	315	315
h	5	6	7	7	7	7	8	8	8	8	9	10	11	11	11	12	12	14	14
I	7	10	10	10	12	12	12	12	14.5	14.5	15	18.5	18	18	24	24	24	28	28
K	10.5	14	14	14	16	16	22	22	24	24	24	30	33	33	33	24	24	45	45
L	148	162	171	196	217	229													
L1	184	194	207	232	254	262	294	339	373	395	420	446	440	435	435	435	754.5	780	780
Ma	130	165	165	165	215	215	265	265	300	300	300	350	400	400	500	500	500	600	600
Mb	85	100	115	115	130	130	165	165											
Na	110	130	130	130	180	180	230	230	250	250	250	300	350	350	450	450	450	550	550
Nb	70	80	95	95	110	110	130	130											
Oa	3.5	3.5	3.5	3.5	4	4	4	4	5	5	5	5	5	5	5	5	6	6	6
Ob	2.5	3	3	3	3.5	3.5	3.5	3.5											
Pa	160	200	200	200	250	250	300	300	350	350	350	400	450	450	550	550	550	660	660
Pb	105	120	140	140	160	160	200	200											
Q	344	380	412	436	487	505	600	638	745	789	988	988	977	1002	1135	1210	1275	1338	1389
Q _{BAF/BAPV}	368	403	436	460	511	531	628	666	778	822	907	932	1014	1035					
R	80	80	98.5	98.5	98.5	98.5													
R1	135	135	170	170	170	170	199	199	268	268	268	268	327	327	327	327	327	490.5	490.5
S	10	12	12	12	14	14	15	15	15	15	15	15	20	20	18	18	18	22	22
V	8	9.5	10.5	10.5	12.5	13.5	16	16	21	21	24	24	32	32	32	40	40	46	46
W	105	113	127	127	138	158			165	165	188	188	224	224	295	243	243		
W1	121	130	148	148	162	176	210	210	246	246	266	266	341	341	361	361	361	306	306
Y	145	160	180	180	196	218	265	265	324	324	357	357	430	430	493	493	493	634	634
Z	75	75	98.5	98.5	98.5	98.5													
Z1	86	86	112	112	112	112	151	151	167	167	167	167	200	200	200	200	200	303	303

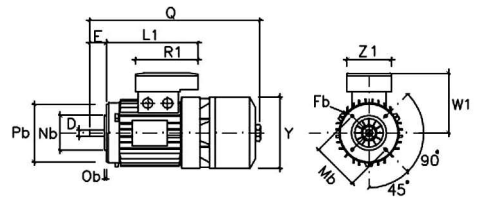
BA B3



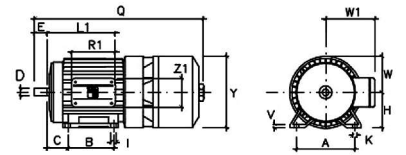
BA B5



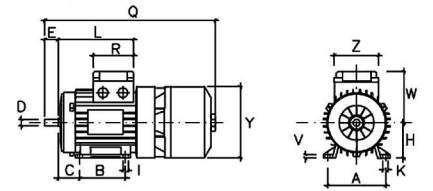
BA B14



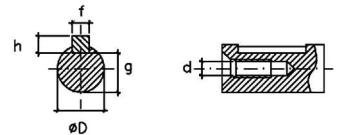
BA 160-280 B3



Double terminal board box



Shaft End



Q_{BAF/BAPV} is the Q dimension for BAF and BAPV series • Cable glands are M20 on size 71 and 80, M25 on size 90 up to 112, M32 on size 132, PG29 on size 160 up to 200, M50 on size 250

* 225S-225M 2-poles U=50mm (2.0 inch), E=140mm (5.51 inch); 315S-315M 2-poles U=60mm (2.36 inch), E=140mm (5.51 inch); 280S-280M 2-poles U=60mm (2.36 inch), E=140mm (5.51 inch); 200L 2-poles U=60mm (2.36 inch), E=140mm (5.51 inch); 132S-132M 2-poles U=60mm (2.36 inch), E=140mm (5.51 inch); 90L 2-poles U=60mm (2.36 inch), E=140mm (5.51 inch)