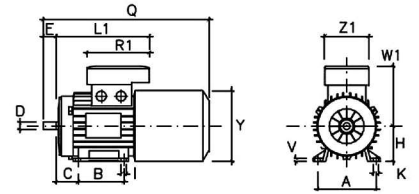




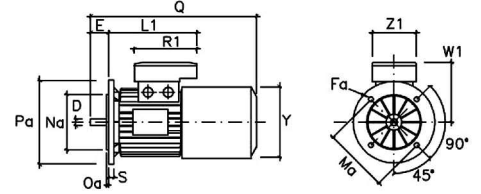
DIMENSIONS (mm ^{inch})

	56	63	71	80	90S	90L	100L	112M	132S	132M	160M	160L
A	90 3.54	100 3.94	112 4.41	125 4.92	140 5.51	140 5.51	160 6.30	190 7.48	216 8.50	216 8.50	254 10.00	254 10.00
B	71 2.80	80 3.15	90 3.54	100 3.94	100 3.94	125 4.92	140 5.51	140 5.51	140 5.51	178 7.01	210 8.27	254 10.00
C	36 1.42	40 1.57	45 1.77	50 1.97	56 2.20	56 2.20	63 2.48	70 2.76	89 3.50	89 3.50	108 4.25	108 4.25
D	9 0.354	11 0.433	14 0.551	19 0.748	24 0.945	24 0.945	28 1.102	28 1.102	38 1.496	38 1.496	42 1.654	42 1.654
d	M3	M4	M5	M6	M8	M8	M10	M10	M12	M12	M16	M16
E	20 0.79	23 0.91	30 1.18	40 1.57	50 1.97	50 1.97	60 2.36	60 2.36	80 3.15	80 3.15	110 4.33	110 4.33
Fa	7 0.28	10 0.39	10 0.39	12 0.47	12 0.47	12 0.47	14.5 0.57	14.5 0.57	14.5 0.57	14.5 0.57	18.5 0.73	18.5 0.73
Fb	M5	M5	M6	M6	M8	M8	M8	M8	M10	M10		
f	3 0.12	4 0.16	5 0.20	6 0.24	8 0.31	8 0.31	8 0.31	8 0.31	10 0.39	10 0.39	12 0.47	12 0.47
g	7.2 0.28	8.5 0.33	11 0.43	15.5 0.61	20 0.79	20 0.79	24 0.94	24 0.94	33 1.30	33 1.30	37 1.46	37 1.46
H	56 2.20	63 2.48	71 2.80	80 3.15	90 3.54	90 3.54	100 3.94	112 4.41	132 5.20	132 5.20	160 6.30	160 6.30
h	3 0.12	4 0.16	5 0.20	6 0.24	7 0.28	7 0.28	7 0.28	7 0.28	8 0.31	8 0.31	8 0.31	8 0.31
I	6 0.24	7 0.28	7 0.28	10 0.39	10 0.39	10 0.39	12 0.47	12 0.47	12 0.47	12 0.47	14.5 0.57	14.5 0.57
K	11 0.43	10.5 0.41	10.5 0.41	14 0.55	14 0.55	14 0.55	16 0.63	16 0.63	22 0.87	22 0.87	24 0.94	24 0.94
L	99 3.90	130 5.12	148 5.83	162 6.38	171 6.73	196 7.72	217 8.54	229 9.02	255 10.04	293 11.54		
L1	166 6.54	184 7.24	194 7.64	207 8.15	232 9.13	254 10.00	262 10.31	294 11.57	339 13.35	373 14.69	395 15.55	
Ma	100 3.94	115 4.53	130 5.12	165 6.50	165 6.50	165 6.50	215 8.46	215 8.46	265 10.43	265 10.43	300 11.81	300 11.81
Mb	65 2.56	75 2.95	85 3.35	100 3.94	115 4.53	115 4.53	130 5.12	130 5.12	165 6.50	165 6.50		
Na	80 3.150	95 3.740	110 4.331	130 5.118	130 5.118	130 5.118	180 7.087	180 7.087	230 9.055	230 9.055	250 9.843	250 9.843
Nb	50 1.969	70 2.756	70 2.756	80 3.150	95 3.740	95 3.740	110 4.331	110 4.331	130 5.118	130 5.118		
Oa	3 0.12	3 0.12	3.5 0.14	3.5 0.14	3.5 0.14	3.5 0.14	4 0.16	4 0.16	4 0.16	4 0.16	5 0.20	5 0.20
Ob	2.5 0.10	2.5 0.10	2.5 0.10	3 0.12	3 0.12	3 0.12	3.5 0.14	3.5 0.14	3.5 0.14	3.5 0.14		
Pa	120 4.72	140 5.51	160 6.30	200 7.87	200 7.87	200 7.87	250 9.84	250 9.84	300 11.81	300 11.81	350 13.78	350 13.78
Pb	80 3.15	90 3.54	105 4.13	120 4.72	140 5.51	140 5.51	160 6.30	160 6.30	200 7.87	200 7.87		
Q	230 9.06	260 10.24	295 11.61	330 13.15	360 14.17	385 15.16	435 17.13	470 18.50	565 22.24	604 23.78	716 27.17	760 28.90
R	75 2.95	80 3.15	80 3.15	80 3.15	98.5 3.88	98.5 3.88	98.5 3.88	98.5 3.88	108 4.25	108 4.25		
R1	135 5.31	135 5.31	135 5.31	170 6.69	170 6.69	170 6.69	170 6.69	199 7.83	199 7.83	268 10.55	268 10.55	
S	8 0.31	10 0.39	10 0.39	12 0.47	12 0.47	12 0.47	14 0.55	14 0.55	15 0.59	15 0.59	15 0.59	15 0.59
V	7 0.28	7 0.28	8 0.31	9.5 0.37	10.5 0.41	10.5 0.41	12.5 0.49	14 0.53	16 0.63	16 0.63	21 0.83	21 0.83
W	93 3.66	97 3.82	105 4.13	113 4.45	127 5.00	127 5.00	138 5.43	158 6.22	198 7.80	198 7.80	155 6.10	155 6.10
W1	111 4.37	121 4.76	130 5.12	148 5.83	148 5.83	162 6.38	176 6.93	210 8.27	210 8.27	246 9.69	246 9.69	
Y	110 4.33	121 4.76	136 5.35	153 6.02	178 7.01	178 7.01	198 7.80	219.5 8.64	258 10.04	258 10.04	309.5 11.54	309.5 11.54
Z	75 2.95	75 2.95	75 2.95	75 2.95	98.5 3.88	98.5 3.88	98.5 3.88	98.5 3.88	108 4.25	108 4.25		
Z1	86 3.39	86 3.39	86 3.39	112 4.41	112 4.41	112 4.41	112 4.41	151 5.94	151 5.94	167 6.57	167 6.57	

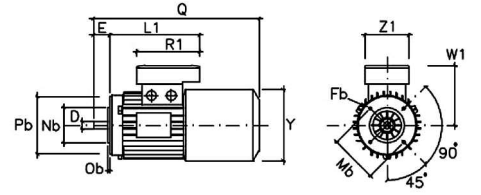
BM B3



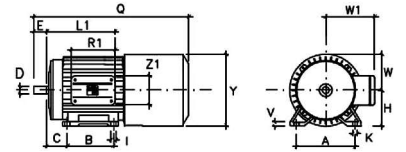
BM B5



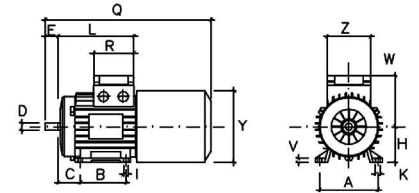
BM B14



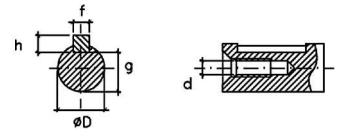
BM 160 B3



Double terminal board box



Shaft End



Cable glands are M16 on size 56 and 63, M20 on size 71 and 80, M25 on size 90 up to 112, M32 on size 132, PG29 on size 160